

Fig.M416 & Fig.M425 Pressure Reducing Valves*



FEATURES & BENEFITS

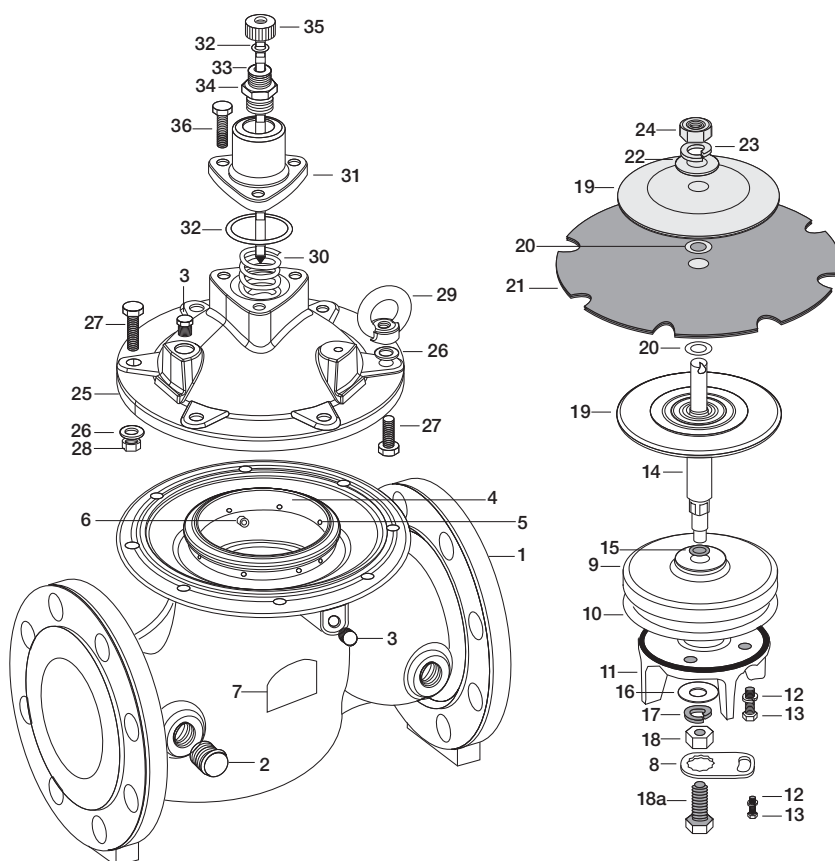
- PRV's enable control of pressure from boosted cold water supplies to match site requirements
- Has a pilot valve assembly to enable accurate pressure control
- Easy setting of the outlet pressure using built-in pressure gauge
- Simple to install
- Sizes DN65-100 & DN150

MATERIALS

Item	Component	Material
1	Body	Ductile iron
2	Plug	Brass
3	Plug	Brass
4	Body Seat	Stainless steel
5	Seat locking bolt	304 stainless steel
6	Seat locking bolt long	304 stainless steel
7	Nameplate	Aluminium
8≠	Bolt locking plate	Stainless steel
9	Disc	Ductile iron
10	Disk facing	Rubber
11	Disk Guide	Bronze + St Steel
12	Spring Washer	316 stainless steel
13	Bolt	316 stainless steel
14	Stem	303 stainless steel
15	'O' Ring	Rubber
16	Washer	316 stainless steel
17	Spring washer	316 stainless steel
18≈	Nut	316 stainless steel
18a≠	Bolt	316 stainless steel
19	Diaphragm disc	Ductile Iron
20	'O' Ring	Ductile Iron
21	Diaphragm	Rubber
22	Washer	316 stainless steel
23	Spring Washer	316 stainless steel
24	Nut	316 stainless steel
25	Cover	Ductile Iron
26*	Washer	Stainless steel
27*	Bolt	Stainless steel
28*	Nut	Stainless steel
29	Lifting Nut	Steel
30	Spring	302 stainless steel
31	Guide cover	Brass/Bronze
32	'O' Ring	Rubber
33	'O' Ring	Rubber
34	Adaptor	Brass
35	Air release nut	Brass
36	Guide cover bolts	Steel



COMPONENTS - BASIC VALVE



≠ DN150 sizes

≈ DN80 & DN100 sizes

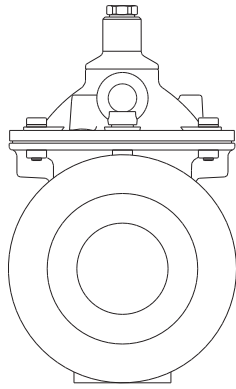
* DN65 - 100 & DN150

* PN25 flanged can only be used to a maximum operating inlet pressure of 18 bar. Refer to Cavitation Chart, inlet and outlet pressure, in IOM.

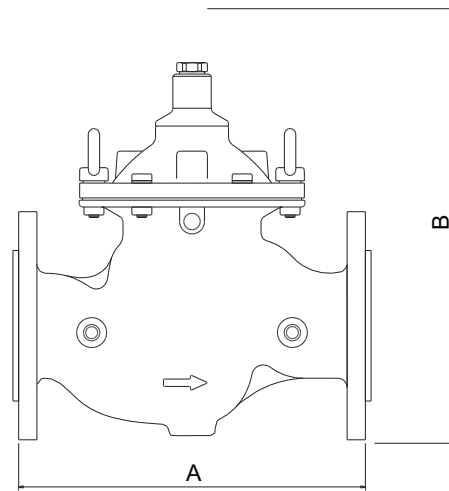
Fig.M416 & Fig.M425 Pressure Reducing Valves



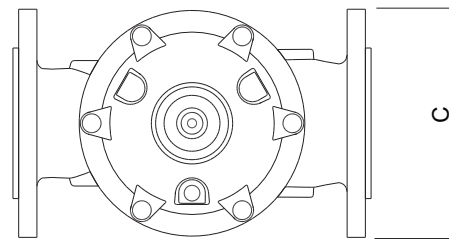
DIMENSIONAL DRAWING



Front view



Side view



Top view

DIMENSIONS & WEIGHTS

Size (DN)	A (mm)	B (mm)	C (mm)	Weight (kg)
65	290	330	19	34
80	310	380	28	39
100	350	390	43	43
150	480	500	88	48

NOTE: Minimum space required for maintenance and to allow for the pilot valve, pipework and fittings, which can exceed the width 'A' and height 'B' of the valve.

The dimensions above are for the complete valve assembly including basic valve, pressure gauge and pilot valve.

HYDRAULIC CHARACTERISTICS OF PRV

Characteristics	Units	DN65	DN80	DN100	DN150
Max. recommended flowrate for continuous operation Flow velocity = 5.5m/s	m ³ /h	40	90	160	350
Min. recommended flowrate	m ³ /h	1	1	1	1
Kv	m ³ /h	43	103	167	407
Control chamber volume	l	0.1	0.3	0.7	1.5

PRESSURE RATING PN16 & PN25 **TEMPERATURE RATING** Max. 85°C **MEDIUM** Potable Water

CONNECTIONS Flanged to BS EN 1092-2 **OUTLET PRESSURE RANGE** 0.5 - 6 bar

DESIGN STANDARD BS EN 558 Series 1 **APPROVALS:** WRAS



PO BOX 719, IPSWICH, IP1 9DU
HOME SALES: +44 (0)1744 458670
EXPORT SALES: +44 (0)1744 458671
TECHNICAL HELPLINE: 0845 604 1790

FAX: +44 (0)1744 26912
EMAIL: uksales@hattersley.com
EMAIL: export@hattersley.com
www.hattersley.com

Every effort has been made to ensure that the information contained in this publication is accurate at the time of publishing. Hattersley assumes no responsibility or liability for typographical errors or omissions or for any misinterpretation of the information within the publication and reserves the right to change without notice.